



PAX ELECTRICITY

DTSD5 PRC

THREE-PHASE IC CARD
PREPAYMENT METER
FOR COMMERCIAL & INDUSTRIAL
APPLICATION

- ▶ Two-way communication for power consumption and meter status monitor
- ▶ IC card interface with protection circuit
- ▶ High data security.
- ▶ Extended tariff capability
- ▶ Improved customer service

kWh

Active power



Single or double direction

LCD

LCD Display



Pulse output



DTSD5 PRC is a three-phase prepaid meter using IC card media for two-way communication to provide a highly secure and flexible mechanism for revenue collection, thereby allowing prepayment customers to be managed efficiently and cost-effectively.

Designed for commercial & Industrial users, simple and elegant, prepayment systems generate advance cash flow for utilities. With this function, the system enables eliminating customer debt, reducing fraud risk, and lowering the costs of meter reading and billing. Utility disconnections are no longer necessary because the consumer has full control over the account, while utility revenue is safeguarded.



Pay as you go

Providing electricity customers with a low cost, convenient method of paying for their electricity as they use it.

The DTSD5 PRC provides a highly secure and flexible method for revenue collection and allows prepayment customers to be managed efficiently and cost-effectively.

Measuring and registration

Meter records import and export energy flowing in separate registers, and adds the values in both directions as the labeled energy consumption.

Remote Programming Capability

Collaborating with PAX-HUALONG's vending system, DTSD5 PRC brings significant benefits both to the utility and to the end users. Designed with ease of remote management in mind, it allows the utility to manage meter parameters via the IC card, thus maximizing the capabilities of a full two-way payment network. Specific features such as remote change of tenancy/supplier and remote credit & debt adjustments are included, all of which can remove the requirement for a customer site visit.

Data security

Using special protection circuit, data of the meter is kept in nonvolatile memory for whole meter life and will be not lost in case of power outage.

Read and write the IC card is protected by three layers of passwords. In addition, each card is set to corresponding specific meter.

Non-Disconnect Facility

The DTSD5 PRC provides a flexible non-disconnect facility, which if configured can minimize the requirement for out-of-hours customer support (on a daily basis).

On the other hand, it provides programmable and friendly hours/emergency credit/negative credit to improve customer service.

Fraud Prevention and Detection

From a revenue protection perspective, the DTSD5 PRC provides a range of fraud prevention and detection measures. Features have been designed to minimize the opportunities for fraud and also to provide the utility with a remote indication of fraud via the IC card.

Special designed IC card slot and protection circuit can keep the meter free from high electrostatic voltage and unauthorized hardware impact.

Improved Customer Service

The operation of the DTSD5 PRC is simple to the end-user and includes a new, easy-to-read backlit LCD display.

To further optimize customer's requirements, automatic reporting of IC card and meter errors via the payment network has been considered to assist with problem determination.

LCD Display

Different display modes:

- Automatic scroll mode
- Manual scroll mode

Information hint:

Use different code and information to indicate different operation, which includes check of both meter and IC card malfunction.

Communication port

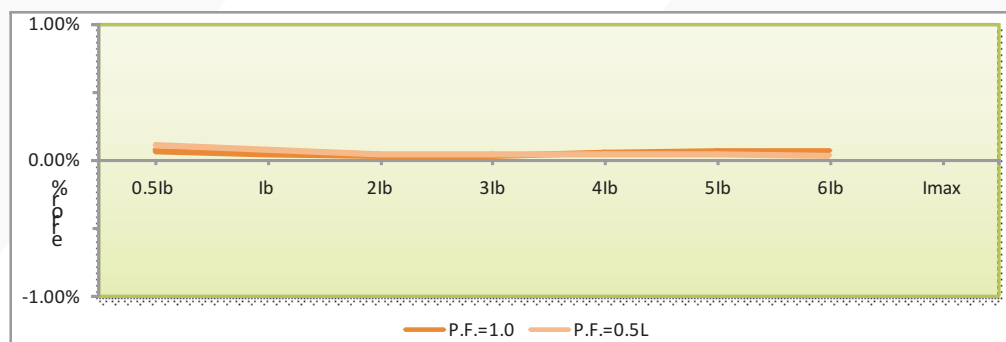
Meter optionally equipped with an IEC optical port or RS485 port, both of the ports are accessible to measured values, security and status data stored in nonvolatile memory.



Technical Specification

Voltage	Reference Voltage	57.7V/100V/110V/220V/230V/240V
	Voltage Range	0.9Un—1.1Un
Frequency	Reference Frequency	50Hz/60Hz
Current	Base Current	Selectable 5A、10A、15A、20A
	Max Current	Selectable 20A、30A、40A、60A
Measurement Accuracy	Active energy to IEC62053-21	Class 1 or Class 2
	Starting Current	0.4%Ib to class 1 and 0.5%Ib to class 2
Power consumption	Voltage circuit	≤2W, 10VA
	Current circuit	≤1VA
Environment Influences	Operation	-25°C to +55°C
	Storage	-40°C to +70°C
	Impermeability according to IEC62059 IP52	
Insulation Strength	Insulation Strength	4kV at 50Hz during 1 min
	Impulse voltage	1.2/50us 6kV
	Protection class II according to IEC62052-11	
Display	Type	LCD
	Number of positions in value field 8 (6+2)	
Outputs	Test pulse output	LED / Photocoupler series
	Alarm	LED
Communication Interfaces	Optical interface	According to IEC62056-21
	RS485 interface	Optional
Dimensions	Width	168mm
	Height	290mm
	Depth	71.5mm

Typical Performance Curve



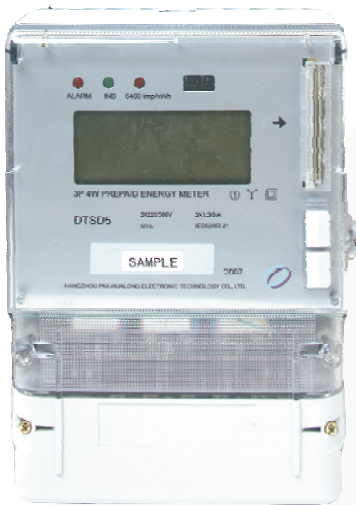
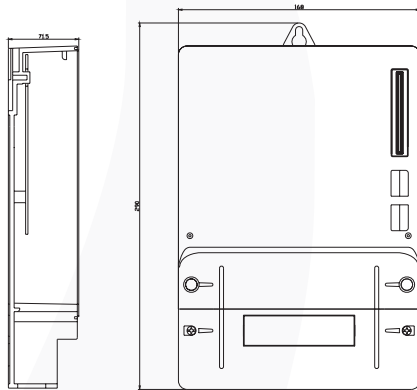


PAX ELECTRICITY

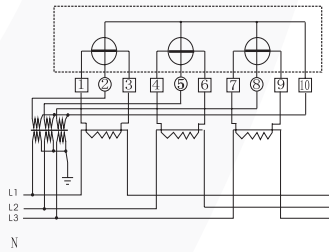
DTSD5 PRC

*Three-Phase Prepaid
Static Electricity Meter*

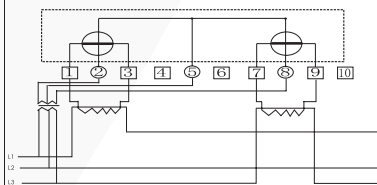
DIMENSION



DTSD5 PRC

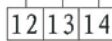


3-Phase 4- Wire active power indirectly connected through current transformer

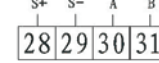


3-Phase 3- Wire active power indirectly connected through current transformer

Relay output



Pulse output RS485



Owing to periodical improvements of our products
The supplied products can differ in some details from the data stated in the prospectus material

Manufactured under a quality system approved to ISO9001

HANGZHOU PAX ELECTRONIC TECHNOLOGY CO., LTD.

Add: Floor 5-6, Block B, Huahong Mansion, No.248, Tianmushan Road, Hangzhou, P.R. China. Postcode: 310018

Tel: +86-571-86717911 Fax: +86-571-86717910

E-mail: market@paxhz.com

For more information www.paxhz.com