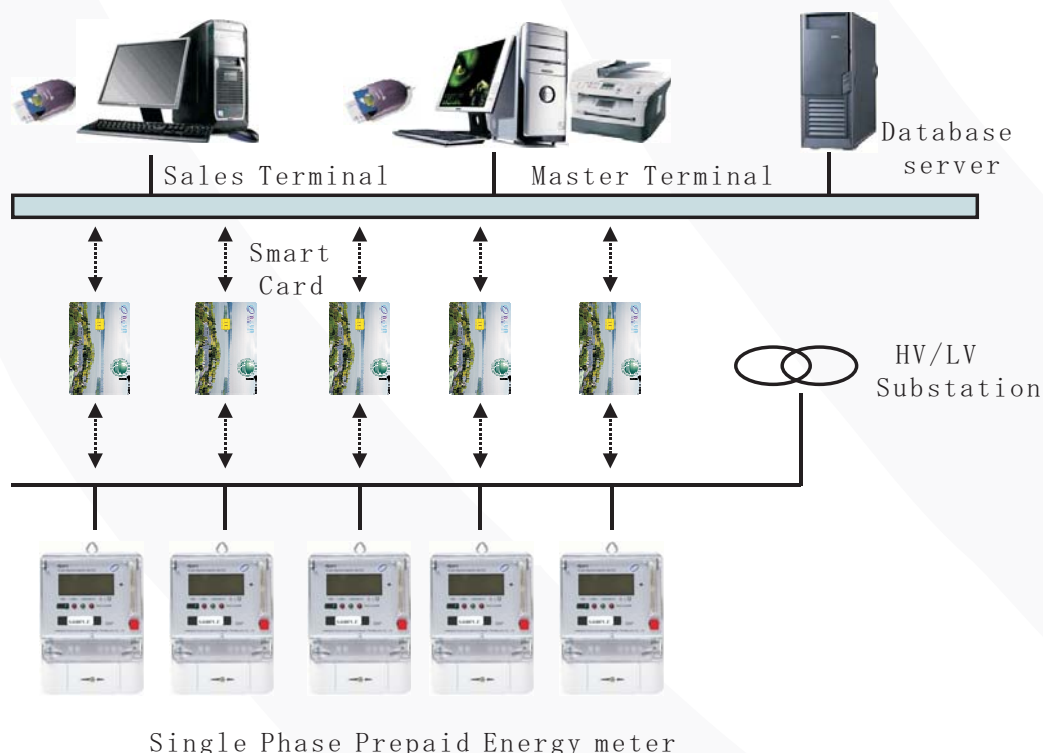


## PREPAYMENT METERING SYSTEM OF ENERGY METER

Prepayment metering system is a new billing methodology that combining a superior electronic customer account management system, it integrate metering equipment and smart card technology, that provide a power utility a substantial saving both in manpower and money while providing new payment option for the customers. It reduces operational cost with paperless revenue collection system and can even replace any electromechanical meter in the market. In this system, the meter used smart card as the medium of communication with the customer, the utility and authorised charging station.

### Infrastructure for single phase smart card prepaid meter system





## ▶ SYSTEM GENERAL

The prepayment metering system consists of prepayment meter, IC card, energy sale management system. Prepayment meter records active energy. Customers, according to their demand, purchase a certain quantity of energy from the local electric power company. Management system with kindly man-machine interface, is easy to collect, analyze and store data. IC card is the medium between prepaid meter and energy sale management system.

## ▶ METER FUNCTION

- The registration of active energy, not only cumulative energy, but also the remain purchased energy.
- Automatic disconnection -- when the available energy is exhausted, the power will be cut.
- Remain energy alarm, reminding customers of buying energy in time.
- Load control, protecting the circuit of power supply.
- Energy data and other information display on LCD.
- Optical and Rs485 communication port available.
- Data memorization during power outage.
- Cumulating latest purchased energy and remain energy in card.
- Recognition fake, one card corresponding to one meter.
- IC card interface protecting circuit against high electrostatic voltage and unauthorized hardware impact.

## ▶ IC CARD SPECIFICATION

IC card enabling bidirectional data transferring, is used as a media between the meter and the energy sale management system, for communication between prepaid meter and the information transferring system. The data that is written by management system can be transferred to the meter, and vice versa, such as security data, metering data and credit data.

## ▶ IC CARD FEATURES

- Security levels protection against fake and copy.
- Authentication against data write and read.
- Large storage capacity, as well as data rewriting and deletion.
- Offline usage, reduced communication cost
- Long life, anti-static and ultraviolet proof

## ▶ Card types

### Management card

- Relay test card: relay status test
- Inspect card: meter status record
- Test card: meter function test and parameters initialization

### Customer card

- Registration card: New customer registration
- Credit card: transfer credit from energy sale department.



**PAX ELECTRICITY**

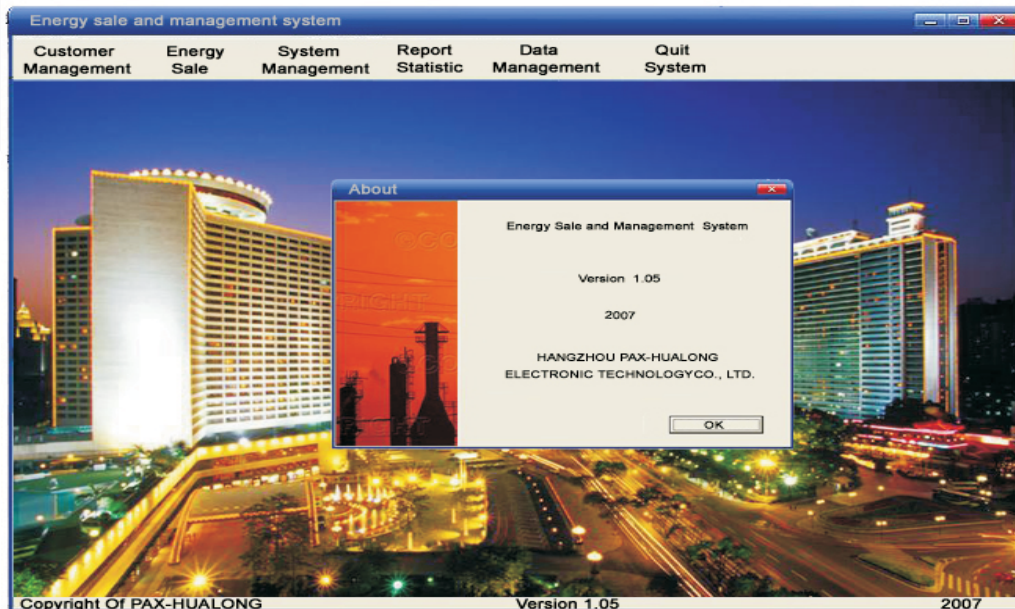
## OPERATION FLOW CHART OF PREPAYMENT SYSTEM





**PAX ELECTRICITY**

## PREPAYMENT ENERGY SALE AND MANAGEMENT SYSTEM



### FUNCTION:

**Customer management:** including new account opening, profile modification, account deletion and etc.

**Energy sale Management:** credit purchasing, information disposal.

**Report analysis:** according to customer's demand.

**System management:** Operator management, system parameter configuration.

**IC card operation:** initialization, read and write,

**Data management:** Query and analysis data based on daily, weekly, monthly, annually regulation.

Owing to periodical improvements of our products  
The supplied products can differ in some details from the data stated in the prospectus material

Manufactured under a quality system approved to ISO9001

HANGZHOU PAX ELECTRONIC TECHNOLOGY CO., LTD.

Add: Floor 5-6, Block B, Huahong Mansion, No.248, Tianmushan Road, Hangzhou, P.R. China. Postcode: 310018

Tel: +86-571-86717911 Fax: +86-571-86717910

E-mail: market@paxhz.com

For more information [www.paxhz.com](http://www.paxhz.com)